

**COMPACTOR GARBAGE TRUCK
INSTRUCTION MANUAL**

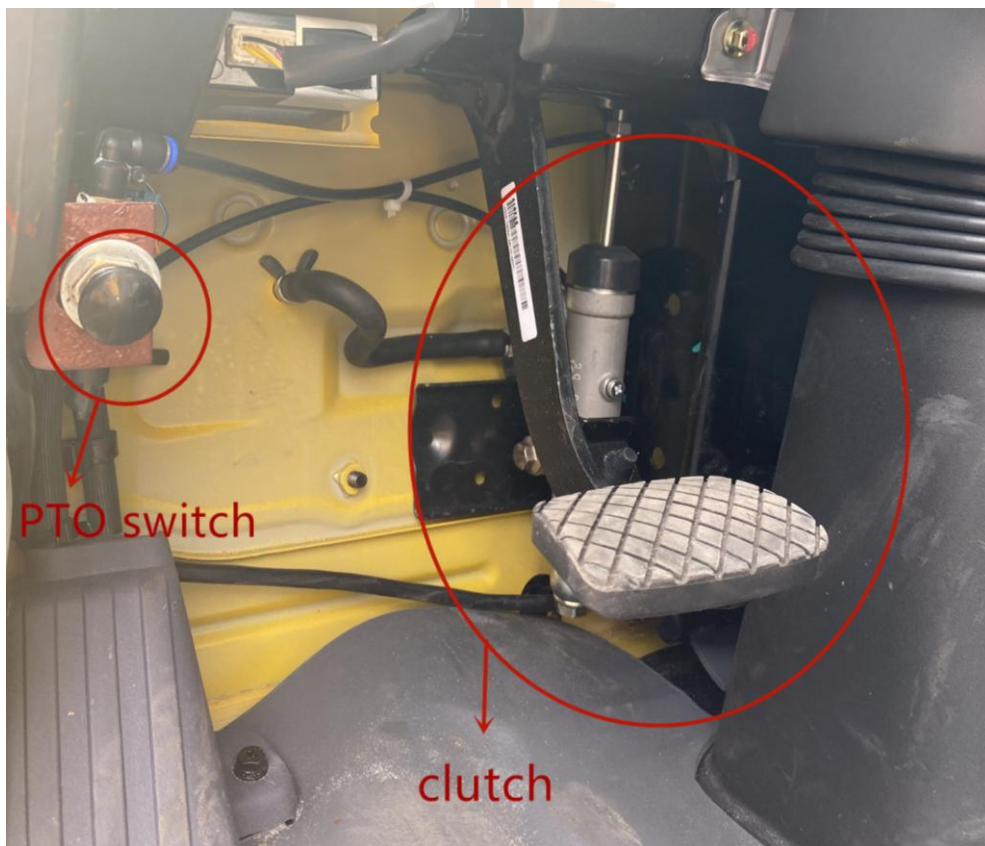


Compactor garbage truck operation

1. Working preparation

1.1 Put the transmission shift handle in neutral position and start the engine.

1.2 Depress the clutch into the end, turn on the PTO, (see below figure2)
slowly release the clutch pedal after the gear is engaged .



(Figure 2: Location of power take-off switch and clutch)

COMPACTOR GARBAGE TRUCK INSTRUCTION MANUAL

1.3 **Press** the power switch on the operation panel (see figure 3), the power indicator light will be bright to prove the power is ready for operation.



(Figure 3: operation panel is in the truck cabin)

COMPACTOR GARBAGE TRUCK INSTRUCTION MANUAL

2. Loading garbage :

2.1 Press Start switch and the loading mode, then these two switch indicator light is bright. (see figure 4)



(Figure 4: Loading Mode)

2.2 Get out of the cabin and walk to the right rear of the truck to continue operation.(see figure5)



(Figure5: Operation box)

COMPACTOR GARBAGE TRUCK INSTRUCTION MANUAL

2.3 Press the below “Down” button to put down the garbage bucket.

(see figure 6)



(Figure6)

2.4 Single cycle operation:

Press below single cycle button. The garbage truck will be operated to finish single cycle garbage loading.

2.5 Continuous cycle operation .:

Press below continuous cycle button. The garbage truck will enter the continuous cycle loading mode.

2.6 Stop:

Press below red stop button, the continuous cycle loading stops .

2.7 Emergency stop: (see figure7)

In case of emergency, turn on the emergency stop switch, and the scraper and skateboard will stop working at any position immediately .



(Figure7: emergency stop switch)

When the emergency stop is on, the operation panel will be in the

3. Discharge garbage



(Figure8: Discharge Mode)

3.1 Turn on the PTO switch and power switch of the cabin operation panel according to the mentioned above operation. **(1.1---->1.3)**

3.2 Press Start switch and the Discharge mode, then these two switch indicator light is bright.

3.3 Press the Tailgate Up switch, and the filler starts to lift.

3.4 Press the Shovel Push switch, the bulldozer starts to discharge the garbage. Press the **Shovel Back switch**, the bulldozer starts to return.

3.5 Press the Tailgate Down switch, and the filler starts to go down.

III. Manual hydraulic operation instructions

(emergency use in case of electrical system failure)



(Figure9: Manual emergency lever)

1. When the electric equipment break down, the corresponding five hydraulic valve handles (at the right side behind the cab see figure 9) can be operated to realize the garbage loading and unloading.
2. When the hydraulic valve handles is operated, the engine cannot be in idle state. make sure that the engine speed is higher than 1200 rpm (can adjust the throttle cable).
3. When we are operating the loader with the hydraulic valve handles, the hydraulic valve must be pushed and pulled to the end, and the loader must be lifted to the end point before it can be lowered.
- 4 After finfish the manual hydraulic operation, release the throttle cable to return the engine to idle state.

IV. Maintenance:

1. Check the oil level of the hydraulic oil tank before working every day. Inspection method: the bulldozer oil cylinder, scraper oil cylinder and sliding plate oil cylinder are in the fully retracted position and the filler is in the closed state. Pls observe that the upper oil level height of oil tank should be between the upper and lower limits of the oil level. If the oil is not enough, it must be replenished.

2. Under normal temperature, 46# anti-wear hydraulic oil shall be used for the hydraulic system. And 32# anti condensation hydraulic oil shall be used in cold weather areas (below 0 °C) . Different brands of oil cannot be mixed together. When adding hydraulic oil to the oil tank, it must be filtered by a 10 μ m oil filter to ensure that the added hydraulic oil is clean and pollution-free.

3. The hydraulic oil filter and fuel filter shall be replaced after the new vehicle is used for three months. And the hydraulic oil filter and fuel filter shall be replaced and cleaned every six months. The replacement procedure is as follows:

When replacing the hydraulic oil, the bulldozer oil cylinder, scraper oil cylinder, lifting oil cylinder and sliding plate oil cylinder are in full retraction state. Remove the drain plug of the hydraulic oil tank and drain the old oil. Remove the primary oil filter in the oil tank, and clean the primary filter, drain plug and oil tank. Please replace it after cleaning

COMPACTOR GARBAGE TRUCK INSTRUCTION MANUAL

or changing , add clean oil to the oil scale, and drain the air mixed in the pipeline.

During the exhaust process, the engine can be started to run at idle speed, and the oil pump can run at a slow speed to exhaust. After the hydraulic oil is replaced, make the hydraulic system run in until it works normally. At the same time, check whether the fasteners are loose, whether the seals have oil leakage, and repair in time in case of any abnormality.

4. The high-pressure hose shall be replaced regularly every two years, and it shall be replaced in time in case of cracking, aging, local damage or swelling.

5. Check the oil leakage and clean condition of the hydraulic system frequently, and repair and replace the oil seal in time.

6. Lubricating grease shall be regularly applied to sliding plate, bulldozer track and lubricating nipple of each shaft , and maintenance shall be conducted once or twice a week. The lubricating oil shall be calcium based grease which can be injected from the oil nozzle with a grease gun until it is extruded from the clearance. See below figure for lubrication parts and oil filling requirements.